

UBmobileMED: Installation, Configuration and Syncing Methods

Target audience for this document: SUNYAB Medical School students and faculty.

UBMobileMed is a web based application that can also be ported to a PDA. This document addresses how to port UBMM to a PDA. The software and hardware technologies involved in this solution are:



Contents:

| | | |
|-----------|---|-------------|
| Part Ia: | <u>Installing AvantGo to PDA and Home/Office PC and PDA</u> | pages 2-3 |
| Part Ib: | <u>Installing AvantGo/Clarinet Bundle to PDA</u> | pages 4-5 |
| Part II: | <u>Configuring AvantGo to Sync UBMobileMed</u> | pages 6-7 |
| Part III: | <u>First time AvantGo sync to install UBMobileMed</u> | page 8 |
| Part IV: | <u>Syncing to UBMobileMed and AvantGo Channels</u> | pages 9-11 |
| Part V: | <u>Syncing at School through a Clarinet EtherIR Port</u> | pages 14-16 |

Problems/Questions?

Contact the OMC PDA Support Group:

Email: omc-pdahelp@buffalo.edu

Phone: 829-2927

Location: 229 Cary Hall

Daytime Hours: Monday through Friday 9:00AM to 5:00PM

Evening Hours: Friday 4:30PM to 7:00PM

Part Ia: Installing AvantGo to Home or Office PC and PDA

Installation of the AvantGo Enterprise software on your PC and PDA

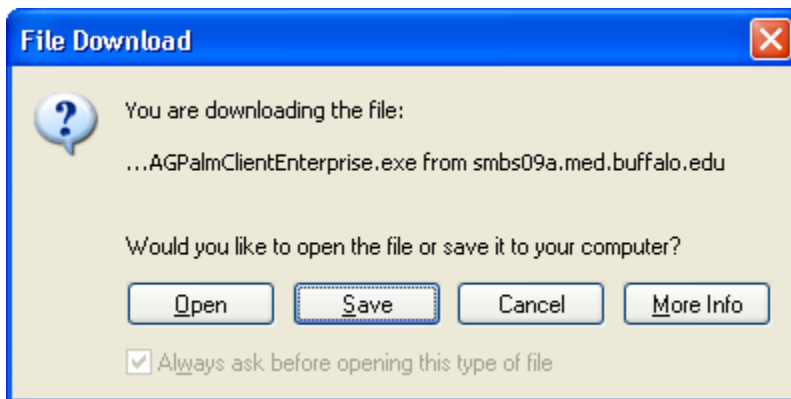
Prerequisites

- a. Your PDA cradle or USB connection is attached to your PC
 - b. You can successfully sync your PDA to your Palm Desktop
 - c. About 2MB free on your PDA
1. Connecting to UBMM requires the AvantGo Enterprise client be installed on your PC and PDA.

For your Palm OS device, run the AvantGo 5.3 installation from here:

<http://www.smbs.buffalo.edu/pda/downloads/AGPalmClientEnterprise.exe>

2. After clicking on the link, the following dialog box will appear. Click “save” and save the file to a temporary location on your PC.



3. After the AvantGo install file downloads, find the location you saved it in and double-click on it to start the install. You should then:
 - a. Click Next at “Welcome to the InstallShield Wizard...”
 - b. Click Yes at “License Agreement”
 - c. Click Next at “Choose Destination Location” (files install)
 - d. Click OK at “AvantGo Client will be installed...”
 - e. Click Finish at “AvantGo Client Installation Complete”

4. Now put your PDA in its cradle and press the HotSync button to install the AvantGo Enterprise client on your PDA.



5. You are now ready to move onto [Configuring AvantGo to sync UBMobileMed.](#)

Part Ib: Installing AvantGo/Clarinet Bundle to PDA

Installation of the AvantGo Enterprise and Clarinet software on your PDA

Prerequisite:

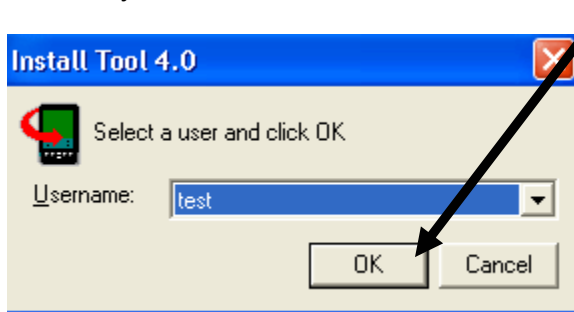
- d. Your PDA cradle or USB connection is attached to your PC
- e. You can successfully sync your PDA to your Palm Desktop
- f. About 2MB free on your PDA

1. If installing the AvantoGo/Clarinet bundle from school, log in to a lab PC in the PDA SyncSite of Cary 231A .

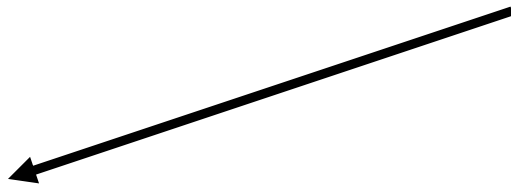
Note: The AvantoGo/Clarinet bundle for the Palm OS is also downloadable via the PDA Support Website under the label “All Medical Students”:

<http://www.smbs.buffalo.edu/pda/application.shtml>

2. To install the bundle from the lab PC's, double-click on the “Shortcut to Palm Apps...” folder on the desktop.
3. Double-click on the “PDA Installs” folder
4. Double-click on the “UBMM” folder
5. Double-click on the “UBMobileMed.prc” file. The Palm Install tool will pop up. Make sure your user account is selected and click “OK”.

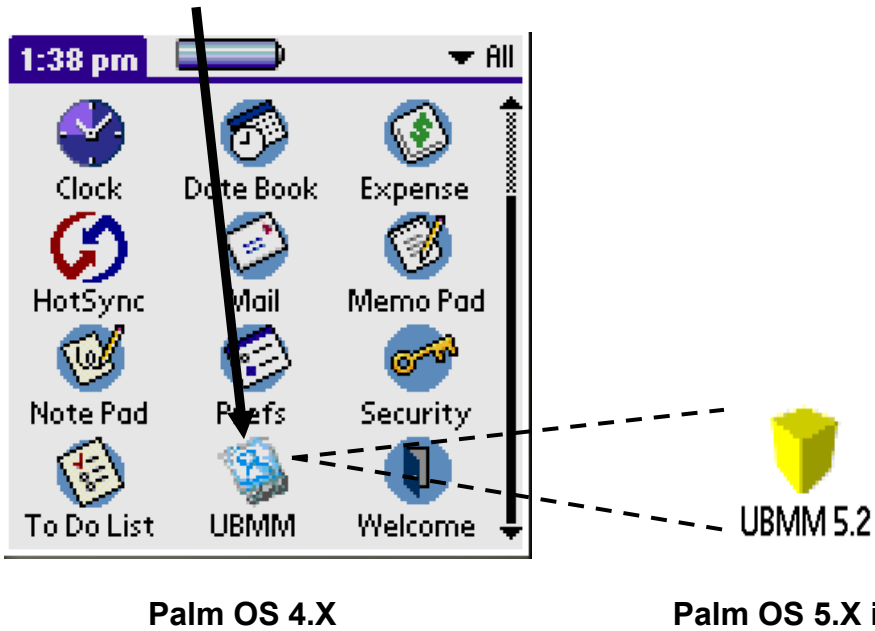


6. Click “Done” on the next screen.
7. Click “OK”
8. Place your PDA in the cradle and press the HotSync button. The AvantGo and UBMM installation files will be sent to your PDA.
9. After the sync is finished, tap the “Launcher” icon on your PDA.





10. Find the “UBMM” icon and tap on it.



11. Tap “Start”. AvantGo and Clarinet files will automatically extract and install on your PDA.

12. Tap the applications home icon.

13. Tap the ClarinetIR icon



14. Answer “Yes” to install ClarinetIR.

15. Tap OK

16. Tap “Launcher” button



17. You are now ready to move onto [Configuring AG Connect to sync UBMobileMed](#).

Part II: Configuring AvantGo to sync UBMobileMed

Prerequisite

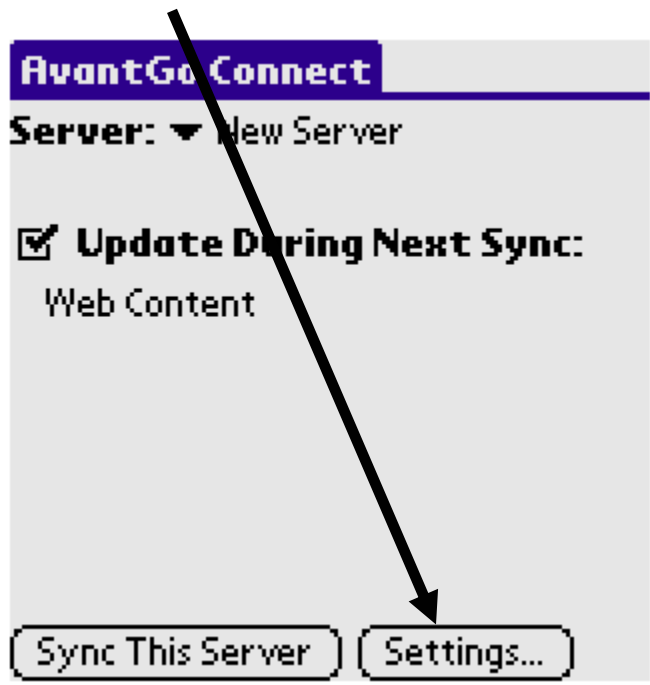
You have installed AvantGo from the Desktop Client on your home or office PC. **The Corporate version from the AvantGo internet website will not work.**

1. If you installed the AvantGo Desktop Client, tap the ‘AG Connect’ icon.

Note: If you installed the AvantoGo/Clarinet Bundle, the only fields you have to fill in are your SMBS username and password. Make sure the “Refresh all Content” box is checked and skip to the next section: [“First time Sync to install UBMM”](#)

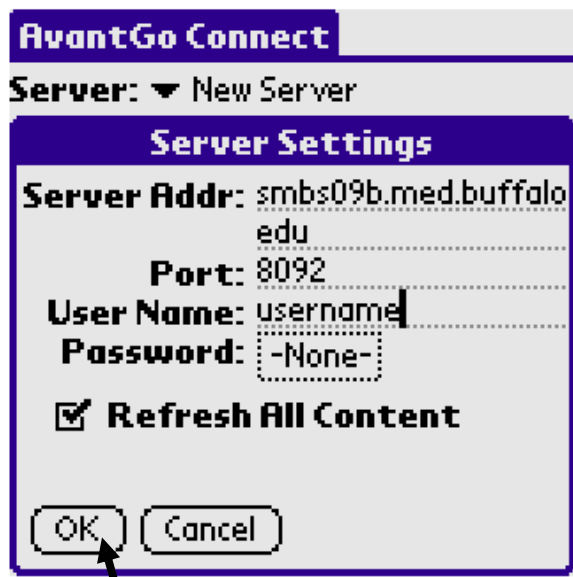


2. Tap the 'Settings...' button.



3. Enter the following information

- a. The UBMM Server info (smbs09b.med.buffalo.edu) *Note: the name of the server will wrap to next line and you **WILL NOT** be able to see the "." in front of "edu".*
- b. Port: 8091
- c. *Your SMBS Username and Password (**NOT** your UBIT for email)
- d. Make sure the "Refresh All Content" box is checked



4. Click OK if you settings look like the above.
5. You are now to move on to [“First time Sync to install UBMM”](#)

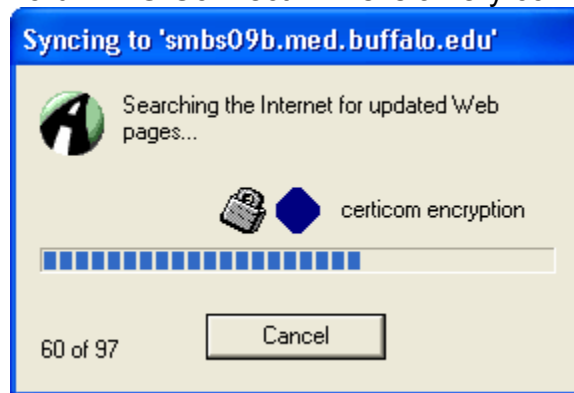
** This is the only place you need to provide your SMBS username and password for syncing AvantGo to UBMM. You will not be asked for it when you actually sync. If you have any confusion about your SMBS credentials, contact OMC-PDAHELP@BUFFALO.EDU.*

Part III: First time AvantGo Sync to install UBMobileMed

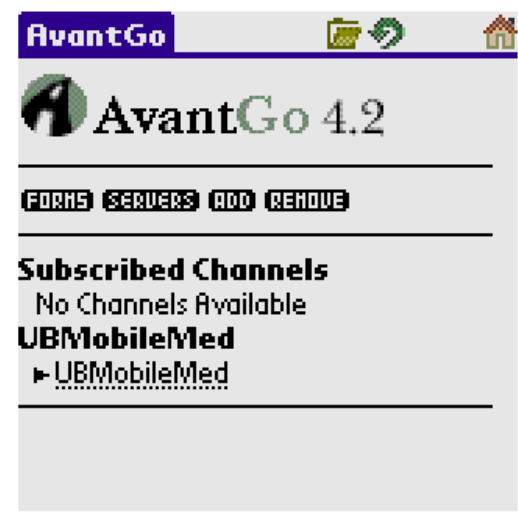
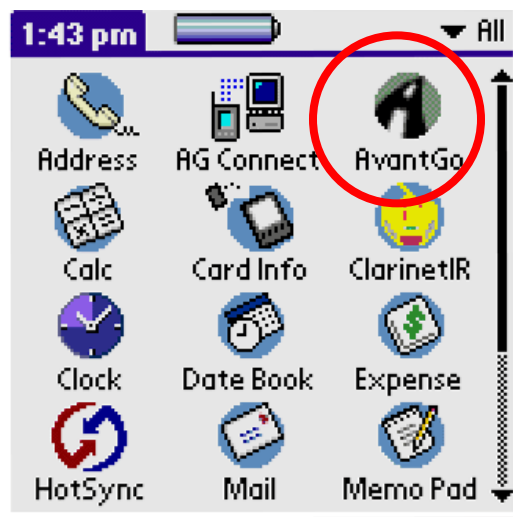
Prerequisites

Do not go any further until these prerequisites are met. If you are having problems, contact [OMC](#) for assistance:

- a. You know your SMBS username and password
 - b. You have installed and configured AvantGo to use UBMM
 - c. Your PDA cradle or USB/serial connection is attached
 - d. You can successfully sync your PDA to your Palm Desktop
1. Place your PDA in its cradle and HotSync your PDA by pressing the button. You will see a window pop up that shows you that AvantGo is syncing to smbs09b. If you get any error messages related to an invalid login, cancel the sync and check your username and password in AG Connect. This is a very common problem.



2. After you have successfully ran a Sync to the Medical School AvantGo server (smbs09b.med.buffalo.edu), tap on the AvantGo icon. If UBMM has been successfully brought to your Palm you will see the image on the right.



AvantGo and UBMobileMed are now installed. Please go to the document titled: "UBMM Getting Started Guide" if you wish to learn more about the UBMM applications and their functionality.

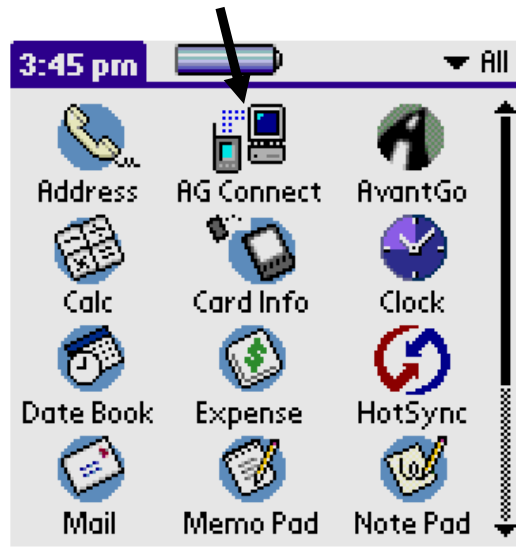
IV. Syncing to UBMobileMed and AvantGo Channels

Prerequisites

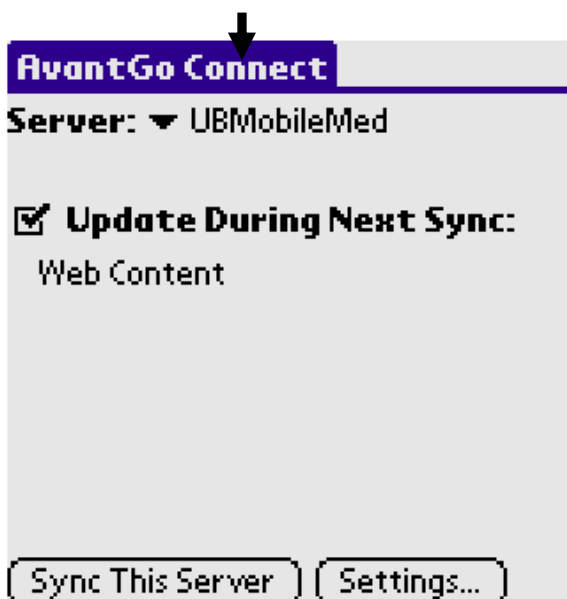
- You have installed the AvantGo client on your PDA and are successfully syncing to UBMM either at home, school or your office.
- You have visited: www.avantgo.com and have setup an AvantGo account.
- You know the username and password you used to setup your account at www.avantgo.com

AvantGo can be configured to allow you to sync both custom channels (like UBMM) and AvantGo Corporate channels (like CNN or Weather Channel). Here is how you do it:

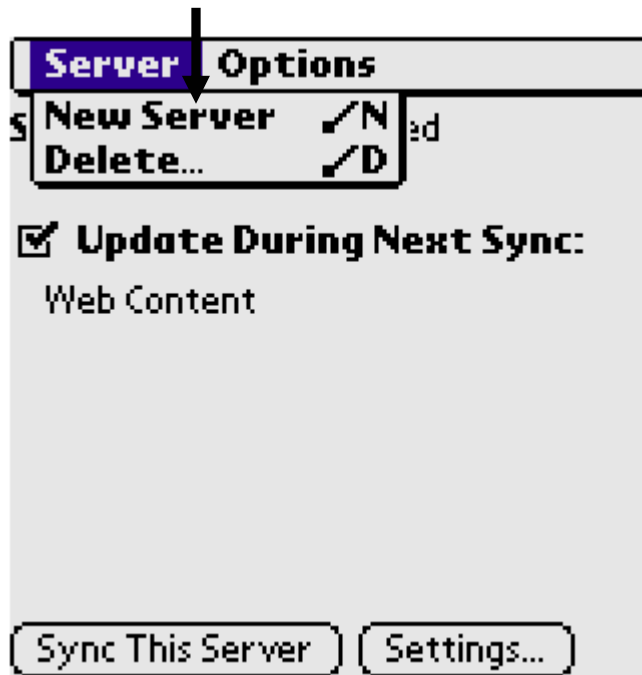
1. Tap on AG Connect



2. Tap "AvantGo Connect" menu



3. Tap "New Server"



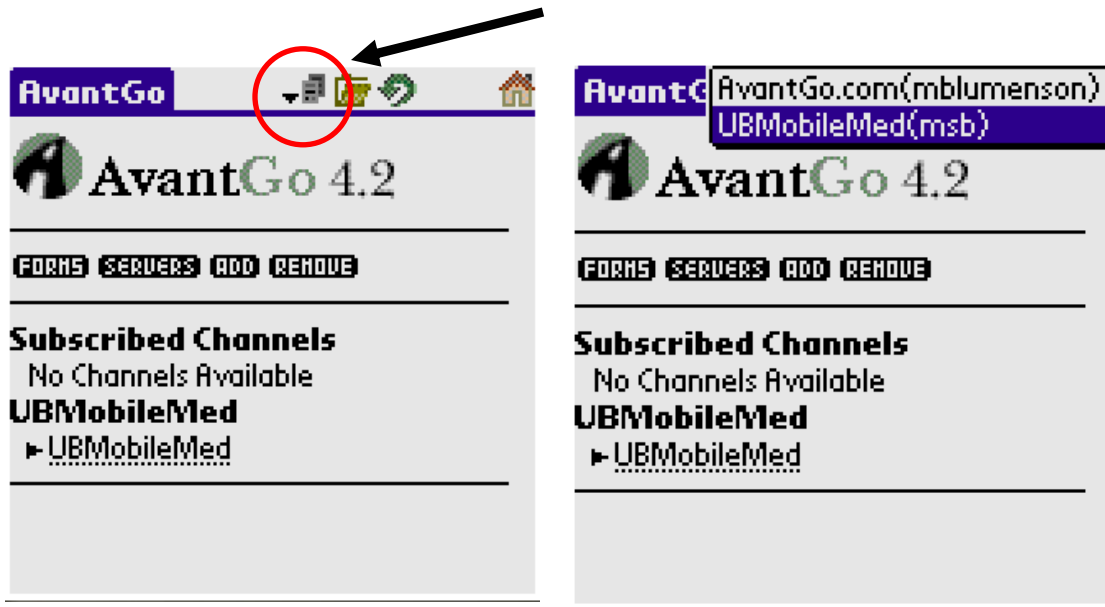
4. Fill in sync info for the AvantGo Corporate Server and leave "Refresh All Content" checked.

Server Addr: **sync.avantgo.com**
Port: **80**
User Name: **Your AvantGo Username**
Password: **Your AvantGo Password**



5. Tap "OK"
6. Sync your PDA. If you selected any corporate channels at AvantGo.com you will receive those channels on this sync.

7. After successfully syncing to the Med School AvantGo Server and the Corporate AvantGo Server, you will see a new icon inside of AvantGo. Tap on this icon to select and view UBMM or the Corporate AvantGo Channel.



8. If AvantGo.com channels do not show up after you sync, repeat these steps:
 - a. Double-check how your account is setup at www.avantgo.com and make sure that you have one or more corporate channels
 - b. Check that your AvantGo username and password are correct inside of AGConnect on your PDA.
 - c. Sync again.

Please report any Problems to [OMC](#).

Part V: Syncing at School through a Clarinet EtherIR Port

In order for students and faculty to easily access and update UBMobileMed data, OMC is installing Clarinet EtherIR Ports in locations where students and faculty frequently do their work and attend classes.



Clarinet EtherIR Ports allow PDAs wireless access to the internet without having to sync the PDA at a PC. This is achieved by the Clarinet device providing the PDA with a TCP/IP network address which a program on the PDA can then use to communicate with servers out on the internet. A practical example: AvantGo is essentially a client web browser that is installed on your PDA. By itself, it has no method of getting web pages onto the PDA. By configuring AvantGo with the WWW address of the server you want to retrieve data from and by connecting to a Clarinet Port, you are ready to receive (or send) data wirelessly.

Using this method you can exchange data from your PDA with any “smart” client that knows how to address an internet server. Email is another example of an application that OMC will introduce on the PDA. With a “smart” Email client, you will be able to receive your Email through the Clarinet devices down to your PDA.

Clarinet EtherIR ports are installed and available:

- Inside and Outside the Main Med School Computing Lab (231 Cary)
- Basement floor of the Health Science Library
- Med Student study area in Farber Annex
- Medical libraries at all hospitals except Sisters, Mercy and the VA.

Look for Clarinet EtherIR Ports to be installed at the following locations in the coming months:

- Medical Libraries at Sisters, Mercy, and the VA Hospitals
- Medical Student Lounge (1st floor Cary)
- Major Medical School lecture halls in Farber Hall

How to sync through a Clarinet EtherIR Port:

Prerequisites

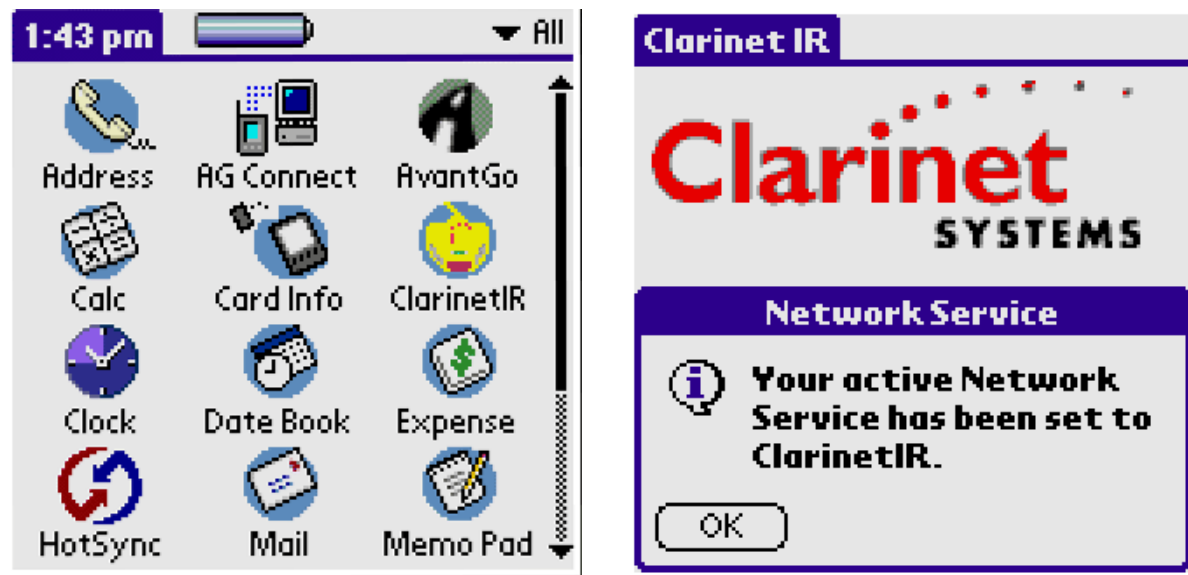
- a. You have successfully completed steps I, III and IV or steps II, III and IV.
- b. If you completed steps II, III and IV (i.e. you did this from home), you still need to download the ClarinetIR client to your PDA. Download it from here:

(<http://www.smbs.buffalo.edu/pda/downloads/ClarinetIR.PRC>)

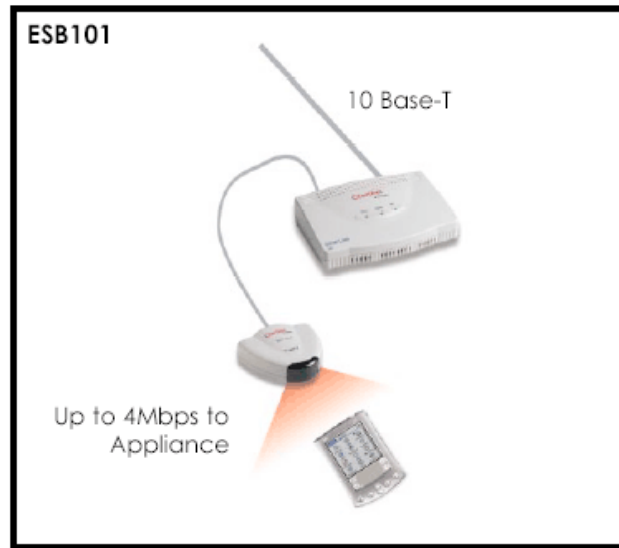
and sync it to your PDA

Once the yellow ClarinetIR icon is on your PDA, continue on:

1. Tap on the yellow Clarinet icon then tap "OK".



2. Tap the Applications icon.
3. Tap AG Connect and select the UBMobileMed Server entry.
4. Point your PDA at the Clarinet EtherIR Port.



5. Tap "Sync this Server" and hold the PDA steady while AvantGo syncs UBMobileMed.



6. You can switch the Server and sync other AvantGo servers (ie. sync.avantgo.com) if you wish. Switch the sever by tapping on the pull down menu next to "Server:"

Report any problems syncing through Clarinet EtherIR to [OMC](#).